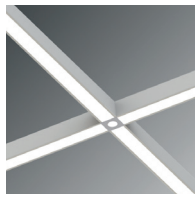


# 1" VersaLux LED Grid Hubs

LED



Illuminated and Non-illuminated Hub Connectors for 1" Grid Mount Lighting System

GHD1 & GHB1

Job Name

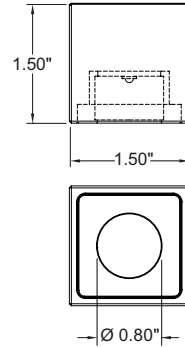
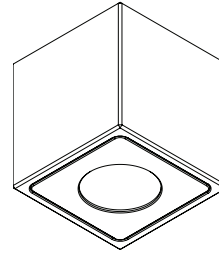
Fixture Type

## Illuminated Hub Order Guide

LED DOWNLIGHT					
GHD1-	-D				-W
Hub Connectors	CRI	Color	Output	Dimming	Lens
L L-Hub	9 90+	27 2700K	S Std.	S Std. (1%)	S 25° Spot
T T-Hub		30 3000K	H High	0-10V	F 40° Flood
X X-Hub		35 3500K	M Max.	H Lutron Hi-Lume (1%)	
I Inline Hub		40 4000K	Custom: Specify Lumens <sup>(2)</sup>		

(Finish)\*

Product Code Example: GHD1-T-D930SSS-W



The modular design of the grid system utilizes L, T, X and I hub connectors to create intricate patterns of light along all standard ceiling grid systems. Hubs are available in both illuminated and non-illuminated versions.

Illuminated hubs utilize state of the art technology, producing enormous amounts of light for their miniature size. Mount illuminated hubs anywhere on the grid independent from the linear sections to create unique lighting patterns.

Mix illuminated and non-illuminated hubs and position accent lighting exactly where required.

### Features

- Hubs seamlessly blend into fixture surface
- Factory programmable custom light output up to 750 lm/hub
- Spot and flood beam angles
- 90+ CRI
- Extremely efficient, up to 90 lm/wt at 90 CRI
- 2700K, 3000K, 3500K and 4000K
- Hubs can be circuited independent of the linear segments of grid system
- 0-10V dimming standard, other systems available
- 50,000+ hours

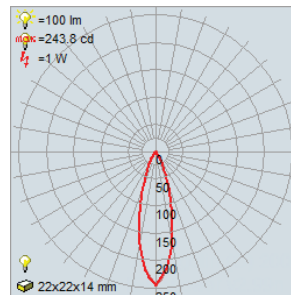
\*White: Standard finish. Specify custom color.

(1) 1% PWM dimming. If CCR is required, contact factory

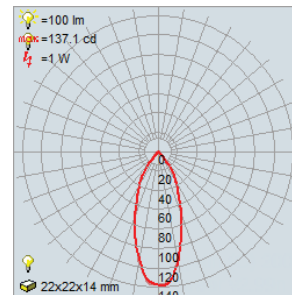
## Module Efficacy – 25° Spot or 40° Flood

Output Setting	90 CRI		4000K		3500K		3000K		2700K	
	Lm/Ft	Wt/Ft	Lm/Wt	Wt/Ft	Lm/Wt	Wt/Ft	Lm/Wt	Wt/Ft	Lm/Wt	
S Standard	250	2.8	90.1	2.9	87.3	3.0	84.5	3.1	80.2	
H High	500	5.7	87.0	5.9	84.2	6.1	81.3	6.5	77.0	
M Maximum	750	8.3	84.5	8.6	81.6	8.9	78.8	9.4	74.5	

### 25° Spot



### 40° Flood

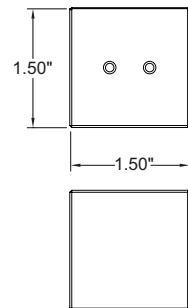
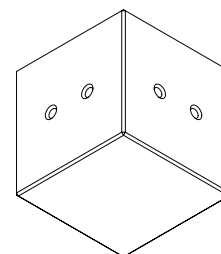


## Blank Non-Illuminated Hub Order Guide

GHB1-	-W
Hub Connectors	
L L-Hub	
T T-Hub	
X X-Hub	
I Inline Hub	

(Finish)\*

Product Code Example: GHB1-T-W



STARFIRE LIGHTING, INC.  
7 Donna Drive, Wood-Ridge, NJ 07075  
starfirelighting.com

P 201.438.9540  
F 201.438.9541

All designs and drawings are the property of STARFIRE LIGHTING, INC. We reserve the right to make changes to specifications and approved designs at any time without notice to facilitate manufacturing methods to the extent that such changes do not compromise design integrity. All performance specifications are subject to +/- 10% deviation.