

# 1" VersaLux LED Pendant

LED

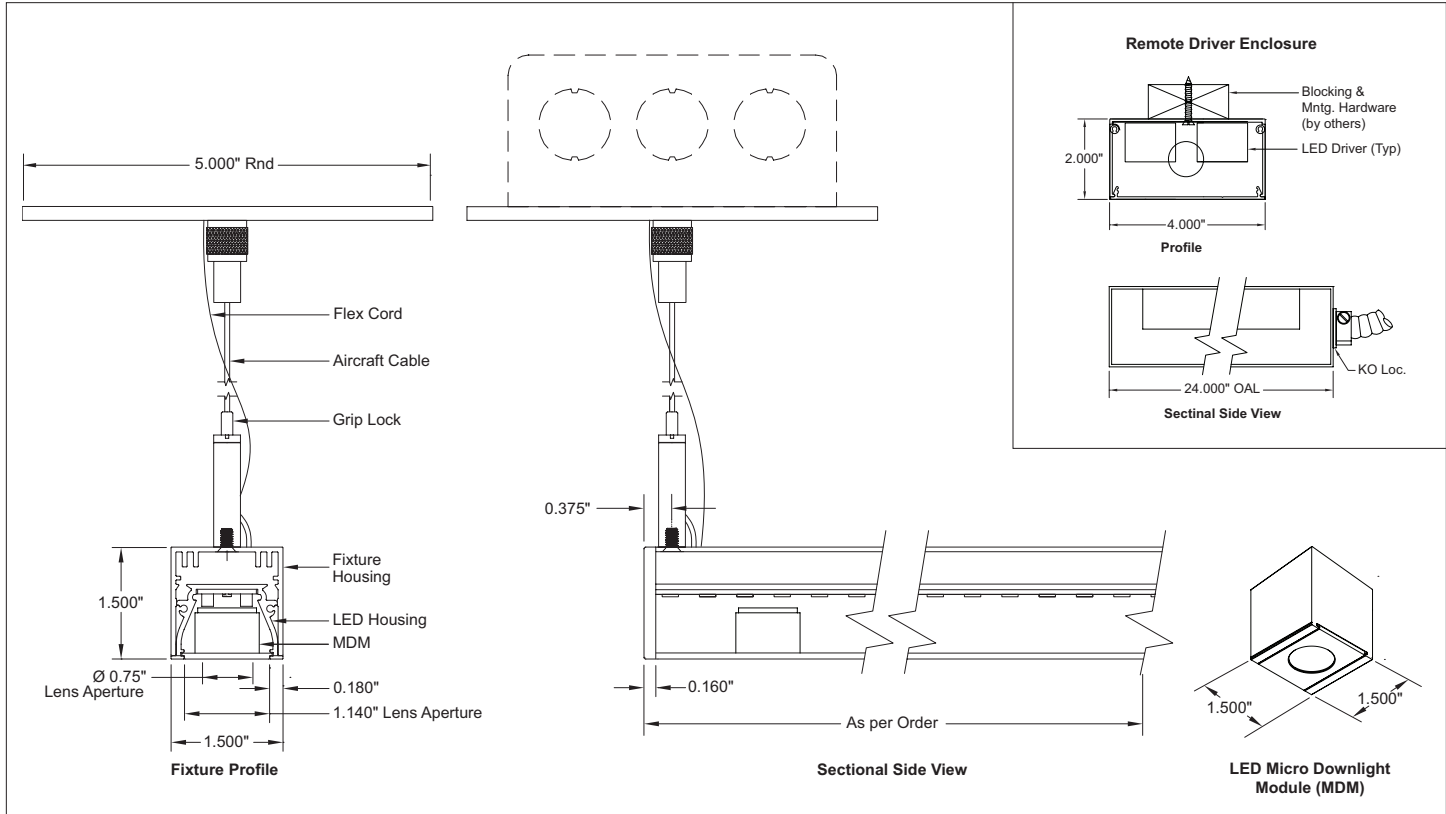


Narrow Profile Linear Direct Pendant with Pinhole Micro Downlight Module and External Driver

**PDLX1 LED**

Job Name

Fixture Type



LED MICRO DOWNLIGHT						LINEAR LED					
PDLX1-	D					-L					-W
Qty	CRI	Color	Output	Dimming	Lens	CRI	Color	Output	Dimming <sup>(2)</sup>	Length (inches)	(Finish)
1	90+	27 2700K	S Std.	S Std. (1%) 0-10V	S 25° Spot	8 80+	27 2700K	S Std.	S Std. 0-10V (1%)	Nominal: 24 <sup>(4)</sup> 36 48	
2		30 3000K	H High	H Lutron Hi-Lume (1%)	F 40° Flood	9 90+ <sup>(1)</sup>	30 3000K	H High	E Lutron 5 Series (5%)	60 72 84	
3		35 3500K	M Max.	Custom: Specify Lumens <sup>(1)</sup>			35 3500K	M Max.	H Lutron Hi-Lume (1%)	96 (see Table)	
4		40 4000K					40 4000K	Custom: Specify Lm/Ft <sup>(1)</sup>	D DALI (1%)	Custom: Cxxx (in inches)	
							TW 2700K- 6500K		W Wireless <sup>(3)</sup>		

Product Code Example: **PDLX1-3D930HSF-L830HH-C120-W**

An ultra-clean line, extremely low profile, narrow aperture direct pendant with pinhole LED Micro downlight module(s). Linear portion utilizes high performance LED boards and flush diffusion lenses. Micro downlight module(s) utilize a high performance COB component and efficient TIR reflector lens assembly.

### Features

- Starfire's proprietary EvenGlow™ system provides uniform lens illumination from edge-to-edge without lamp imaging, bright spots or shadows at any length
- Fixtures fabricated to any specified length without custom engineering
- Exceptional lumen per watt efficiency
- Linear and downlight elements are independently circuited and dimmable
- Future proof LED boards

### Fixture Specifications

- Housing: Heavy-duty extruded aluminum
- Finish: White (std), custom available
- Weight: Approx. 1 lbs per linear foot
- UL Listed, (indoor non-condensing)

### Electrical

- Power consumption: Per specification based on LED configuration
- Input Voltage: 120-277V universal driver
- Ambient operating range: -4 °F to +100 °F
- Remote electronic driver with full dimming range at any output choice
- Class 2 plenum wiring between fixture and remote driver
- 1% Dimming: 0-10V standard (included), consult factory for other options

### Mounting

- Round canopies (std), square available. Consult factory for special ceiling conditions
- Aircraft cable (std), stem optional. Mounting location 0.375" from end of fixture
- Contact factory for fixture lengths >96"
- Remote driver enclosure can support one or more fixture segments (one, std).

### Options (Consult factory)

- Occupancy sensor, daylight control module

### Linear LED Specifications: Page 2

### LED Downlight Specifications: Download cut sheet

- (1) Factory to confirm availability
- (2) 1% PWM dimming. If CCR is required, contact factory
- (3) Specify wireless system
- (4) Available in output levels of 450 lm/ft or greater only



STARFIRE LIGHTING, INC.  
7 Donna Drive, Wood-Ridge, NJ 07075  
starfirelighting.com

P 201.438.9540  
F 201.438.9541

All designs and drawings are the property of STARFIRE LIGHTING, INC. We reserve the right to make changes to specifications and approved designs at any time without notice to facilitate manufacturing methods to the extent that such changes do not compromise design integrity. All performance specifications are subject to +/- 10% deviation.

# LED Narrow Profile Direct Pendant with Pinhole Micro Downlight Module – External Driver

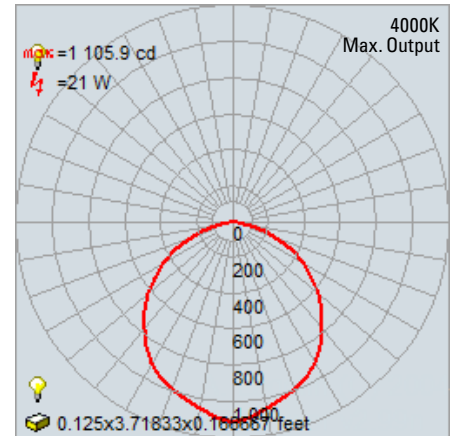
## PDLX1 LED

### Linear Diffusion Lens

### LED Strip

High output edge-to-edge, end-to-end illumination

- Choice of lumen output levels:
  - S:** Standard
  - H:** High
  - M:** Maximum
  - C:** Custom (between 200 and 1000 Lm/Ft)
- LED Efficiency: Up to 160 Lm/Wt at Maximum output and 180 Lm/Wt at Standard power (at 80+ CRI)
- L70: 50,000+ hours at Maximum output
- 2700K, 3000K, 3500K, 4000K and Tunable White: 2700K-6500K
- CRI: 80+ or 90+
- Color Consistency: Equal or better than 3 SCDM with chip mixing
- UL Listed, (indoor non-condensing)
- 5 year limited warranty\*



### Linear Efficacy

Output Setting	Lm/Ft	4000K		3500K		3000K		2700K	
		Wt/Ft	Lm/Wt	Wt/Ft	Lm/Wt	Wt/Ft	Lm/Wt	Wt/Ft	Lm/Wt
<b>S</b> Standard	<b>250</b>	1.7	144.1	1.8	141.0	1.8	135.8	2.0	122.3
<b>H</b> High	<b>500</b>	3.6	138.7	3.7	136.0	3.8	130.5	4.3	115.6
<b>M</b> Maximum	<b>750</b>	5.6	133.0	5.7	130.6	6.0	125.1	6.9	108.9

Performance for nominal 4 foot length or greater (Std. 6ft)

\* See Starfire website for Product Limited Warranty

## Fixture Dimensions

### Fixture Overall Length\*

Nominal	Actual
24"	22.60"
36"	33.62"
48"	44.65"
60"	55.67"
72"	72.20"
84"	83.22"
96"	94.25"

#### Fixture Length Example:

To order a nominal 36" length (33.62" exact): enter **36**

For an exact 36" length\*: enter **C36**

Consult factory for fixture installation dimensions

\* Some exact lengths may include unobtrusive lens filler



STARFIRE LIGHTING, INC.  
7 Donna Drive, Wood-Ridge, NJ 07075  
starfirelighting.com

P 201.438.9540  
F 201.438.9541

All designs and drawings are the property of STARFIRE LIGHTING, INC. We reserve the right to make changes to specifications and approved designs at any time without notice to facilitate manufacturing methods to the extent that such changes do not compromise design integrity. All performance specifications are subject to +/- 10% deviation.